

CCS Staff In the Know



Updated COVID Protocols

The recent press release that was issued on Wednesday to parents and staff is [attached here](#) for your reference. If you have any questions, please contact your principal (direct supervisor) and/or school nurse.

COVID-19 Dashboard

The number of positive cases is newly reported for the week. Quarantines are based on an individual(s) being considered a close contact. A close contact is within 6 feet for at least 15 minutes cumulatively over a 24-hour period.

For the Week of August 23-26th

12,800	Total Number of Students	70	Total Confirmed new positive cases (staff & students)
1,587	Total Number of Staff	903	Total quarantined (staff & students)

If you are experiencing any COVID-like symptoms please contact your school nurse and/or healthcare provider for the next best steps.

Follow our social media channels for up to date information:



@cravencountyschools



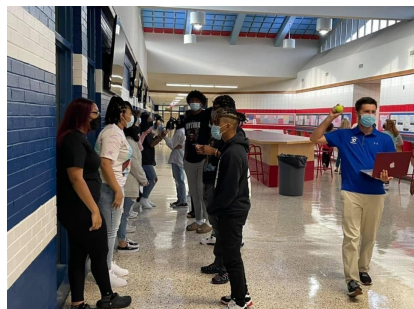
Online mCLASS with DIBELS 8th Edition Course Description mClass Update

Administrators and teachers should complete the mClass online training prior to the Beginning of Year (BOY) assessment window that begins August 30 – September 20. You can create an account for the training by clicking this [LINK](#), enter your name and email, create a password, click sign up, and bookmark the course. It will be important to use a consistent log-in once you start the course so that you can generate a completion certificate.

All administrators and teachers who complete this self-paced course will turn in their certificates to the school's Assistant Principal. Mr. Jason Griffin will collect those certificates and issue 1 literacy credit for the completion of this course.

Please contact your school's District Learning Systems Coach if you need help with your mClass assessments and contact Mr. Jason Griffin if you have questions regarding your literacy credits.

THE EAGLES ARE SOARING



New NCELI Updates from NCDPI for Kindergarten Teachers

New! Family Engagement features are coming to the NC Early Learning Inventory (NC ELI) platform!

Beginning the week of August 30th, the Family area of the NC ELI platform will have additional Family Engagement features. These features will allow NC ELI teachers to communicate with students' family members directly from the platform. Teachers will have the ability to:

- invite family members to access the secure Family area on the web or by downloading the free Teaching Strategies Family App.

- send messages and announcements to family members.

- share student documentation, reports, and resources.

- receive communications and documentation from family members.

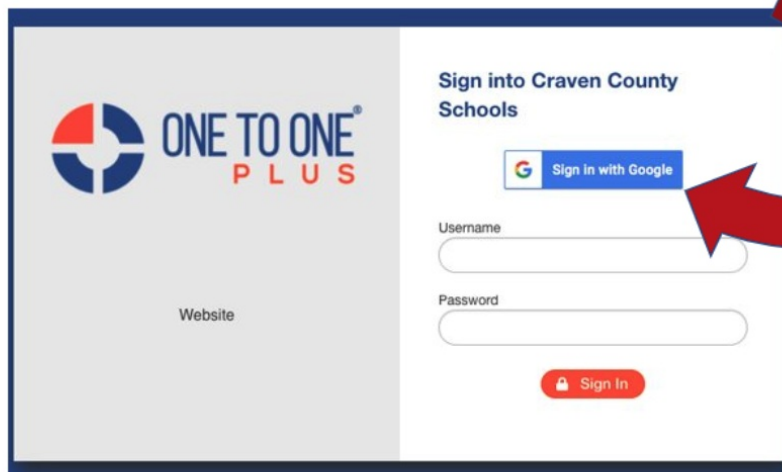
To assist with your implementation of this functionality, Teaching Strategies has posted information that will help you learn how to use these new features in the [Resources for NC ELI Teachers Padlet](#). Teaching Strategies will also host two webinars on September 7 and September 9 at 3:30 PM. If interested, please register for these webinars [here](#).

THE GATORS AT WJG ARE ENGAGED



TECHNOLOGY UPDATES

Don't forget to bookmark our new tech request site.
(When you arrive at the site, just press sign in with Google)



Sign into Craven County Schools

Sign in with Google

Username

Password

Sign In

Techrequest.cravenk12.org

Or

1to1Plus.cravenk12.org

EC Information

Mark your calendars for EC Program Trainings for new EC Teachers. These trainings will be held via Zoom and will help ensure that all teachers have the necessary professional learning opportunity to implement the required instructional programs.

New EC Teacher Program Trainings

Middle School & High School

Language! - Sept. 16th (8:30-4:00)

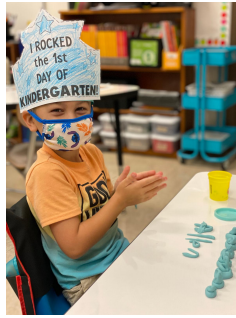
Trans Math - Sept. 9th (8:30-4:00)

Elementary School

SPIRE Sept. 10th (8:30-4:00)

Trainings will be held via Zoom.
Budget code information will be added to Frontline.

Our Kinders at TPE Rocked The First Week of School



**You don't have to be a teacher or CCS employee to join -
anyone can be a member of PIE!**

**Parents, community supporters, and
staff in all CCS departments are encouraged to join PIE!**

***When you join and support PIE, designate your
membership to the school of your choice
to help them win cash for their operating funds.***

***Support your school through
PIE membership for just \$15!***

Learn how at cravenpartners.com!



Schools. Business. Community.

CRAVEN COUNTY PARTNERS IN EDUCATION

For a list of PIE School Ambassadors,
a Membership Form, and
a link to the grants offered by PIE,
visit cravenpartners.com or contact
Darlene.Brown@Cravenk12.org.

Return your completed
Membership form to your
PIE School Ambassador or
to PIE at Central Services.

How can you join PIE? There are two ways!

One-time Payment Member (Everyone is Eligible)

*And be eligible for
each consecutive drawing!*

- ⇒ Join by September 27 to be eligible
for the \$150 drawing on September
29
- ⇒ Join by October 4 to be eligible for
the \$125 drawing on October 6
- ⇒ Join by October 11 to be eligible for
the \$100 drawing on October 13
- ⇒ Join by October 18 to be eligible for
the \$75 drawing on October 20

***Each school level (elementary, middle,
high, & early college) with the highest
percentage of participants will be awarded
\$500 (80% participation is required to be
eligible—parents and staff, help your
school be eligible!).***

**Make a One-Time Payment
for as little as \$15!**

Payroll Deduction Member (CCS Employees Only)

- ⇒ Join by October 18
and be eligible for the
Dr. Miller's Challenge
drawing for \$500 at the
end of October!

***The school with the highest
number of participants in the
Payroll Deduction Program
will be awarded
\$1,000!***

**Minimum \$100 per year
to join through
Payroll Deduction.**

**Become a
Sustaining Member
for automatic renewal!**

All money awarded is the personal property of the winner!

**Teachers: As a member of PIE, receive one extra point on your
total grant score for TRAA Art Grants, PIE Grants,
International Paper Math and Science Grants,
and Superintendent's ECP Grants.**

And, win money for your classroom and your school!



2021-22 Grants Administered by PIE

- ⇒ *International Paper Math and Science Grants - \$250 per grant, four grants awarded per cycle. Math and/or Science focus. All grade levels, multiple grants per school allowed. Two Cycles - Due 9/22 and 2/9, 5:00 pm.*
- ⇒ *Superintendent's Exceptional Education for Exceptional Children Grants - \$500 per grant, two grants to be awarded. All ECP teachers at all grade levels are eligible. Multiple grants per school allowed. Due 10/20, 5:00 pm.*
- ⇒ *PIE Grants - up to \$1,500 - any subject. PIE Grants are cash awards offered by Craven County Partners In Education to encourage innovative and creative educational projects that have the potential of encouraging long-range growth in educational performance. All grade levels, multiple grants per school allowed. All PIE Grant winners win one free ticket to the PIE Luncheon! Two Cycles - Due 10/6 & 1/12, 5:00 pm.*
- ⇒ *Aspire to Inspire Grant - up to \$500, one grant awarded - all 4th-grade teachers are eligible - Math and/or Science focus. One grant per school allowed. Due 10/20, 5:00 pm.*
- ⇒ *The Bate Foundation Individual School Grant - up to \$5,000, \$30,000 to be awarded - all principals are eligible - art, music, health and fitness, and athletics focus. One grant per school allowed. Due 10/20, 5:00 pm.*
- ⇒ *Dr. Bryan Johnson STEM Grant - up to \$2,000 - all principals are eligible - STEM focus. One grant per school allowed. Due 10/20, 5:00 pm.*
- ⇒ *International Paper Literacy Grant - \$5,000, two grants will be awarded - all principals are eligible - literacy focus. One grant per school allowed. Due 10/20, 5:00 pm.*
- ⇒ *TRAA Art Grant - \$250, eight grants be awarded - any grade, all art teachers are eligible. Multiple grants per school allowed. Due 10/20, 5:00 pm.*
- ⇒ *Toyota of New Bern Tech Grant - up to \$3,000, one grant will be awarded, all principals are eligible - technology for your school! One grant per school allowed. Due 12/21 5:00 pm.*
- ⇒ *Donna & Team New Bern Music Grants (available to ALL schools in the Craven County Schools district) - four grants awarded at \$1,000 each, \$4,000 to be awarded. Open to all music-related classrooms and programs. All grade levels, multiple grants per school allowed. Due 12/1, 5:00 pm.*

To apply, visit cravenpartners.com/ and visit the grant section.

Be sure you are signed into your Rapid Identity account through Craven County Schools email when you access the grants link to the shared CCS Google Drive.

As a member of PIE, receive one extra point on your total grant score for the PIE Grants and International Paper Math & Science Grants and help your school win money! Ask your PIE School Ambassador or visit <https://cravenpartners.com/> to learn how.

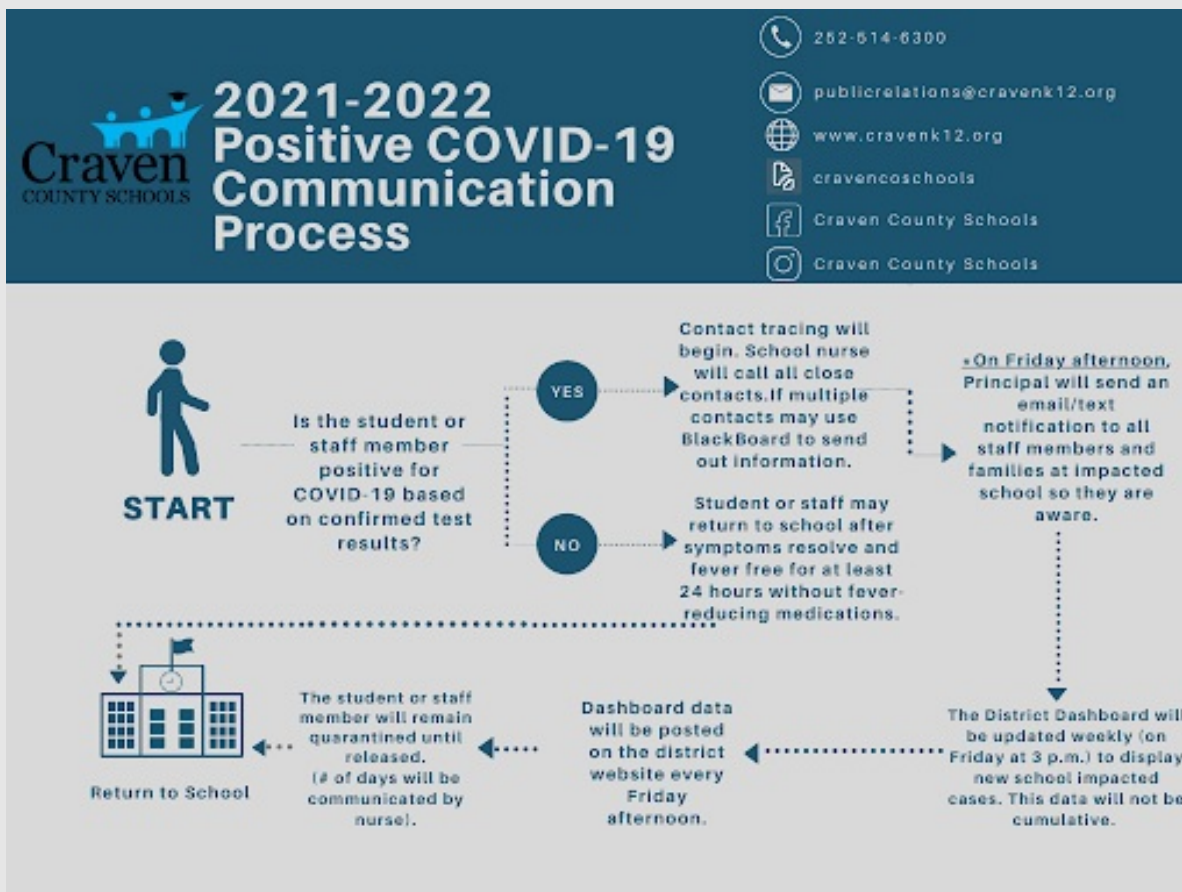
*If you have questions about these grants
or becoming a PIE member, contact
Darlene.Brown@cravenk12.org.*

**Thank you for supporting Partners In Education,
as we support our educators in Craven County Schools.**

It was a great first week of Learning



New Bern High



2021-2022 COVID COMMUNICATION PROCESS

We wanted to share our updated positive COVID communication process for the 2021-2022 school year. Quarantine is required for an individual who has been a close contact (within 6 feet for at least 15 minutes cumulatively over a 24-hour period) of someone

who is determined positive with COVID-19 either through testing or symptom consistent diagnosis.

Please note if an individual is considered a close contact, the close contact will receive notification from the school nurse. In the event that there are multiple close contacts, the principal will assist with sending out an alert phone call to all close contacts to help get the information out as quickly as possible. Based on the recommendations from the NCDHHS Strong Schools NC Public Health Toolkit, as long as a close contact was wearing their mask properly (covering their nose and close fit to their face) they will not have to quarantine. Also, if the close contact is vaccinated they will not have to quarantine.

The District Dashboard will be updated weekly and posted on Friday afternoons. This dashboard will not be cumulative and will share the number of positive students and staff as a total. Each Friday afternoon, a letter will be distributed to schools impacted by positive cases so the principal(s) can share this information with all staff and parents.



Follow us for the latest:

